

**chokers**  
Omega + Tonda

Bicolor | 2,6 mm | 44526

Bicolor | 3,3 mm | 44533

GG | 4,0 mm | 16680

GG | 3,0 mm | 16678

GG | 2,0 mm | 44420

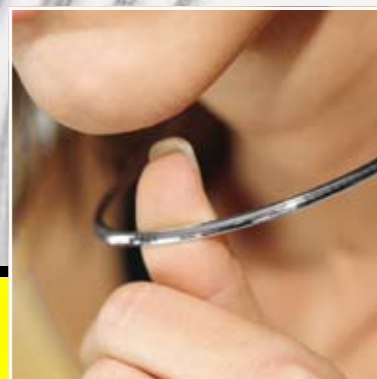
GG | 1,5 mm | 44415

WG | 4,0 mm | 16680

WG | 3,0 mm | 16678

WG | 2,0 mm | 44420

WG | 1,5 mm | 44415



BEDRA stands for quality: this is why we only supply brand products „made in Germany“.

We supply 8/- and 14/- carat, mostly in yellow gold, sometimes also in white gold.

Our assortment of jewellery complements our extensive range of goods and services and makes us a „full service partner“.

**Jewellery orders (by fax: +49 (0) 70 33 69 36 - 50)**

**Customer:**

Customer no.:

Name:

Street address:

ZIP/city:

Tel.:

Date:

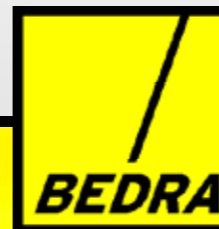
quan.	item no.	description	composition	length (in cm)

**Billing:**

- Everything on account
- Processing costs on account, fine metal from weight account

**Space for reference notes/company stamp/signature:**

**TIP:** simply make copies of the order form contained in the brochure or download it under [www.bedra.de/downloads](http://www.bedra.de/downloads)

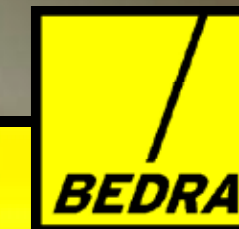


[www.bedra.de](http://www.bedra.de)

© www.prh-werbeagentur.de | status 01/2010 - subject to changes and errors.



**Exclusive assortment  
of jewellery**



[www.bedra.de](http://www.bedra.de)

**colliers**  
Anker, Panzer + Figaro

GG | 1,2 mm | 0435  
GG | 1,3 mm | 0440  
GG | 1,7 mm | 0450  
GG | 1,9 mm | 0460



GG | 2,7 mm | 1180  
GG | 2,4 mm | 1170  
GG | 2,1 mm | 1160  
GG | 1,7 mm | 1150  
GG | 1,4 mm | 1140  
GG | 1,2 mm | 1135

GG | 2,2 mm | 5332  
GG | 1,9 mm | 5332  
GG | 1,5 mm | 5342

**colliers**  
Venezia

GG | 0,9 mm | 7910  
GG | 1,1 mm | 7913  
GG | 1,4 mm | 7915  
GG | 1,8 mm | 7920



**identification bracelets**

GG | 14 + 16 cm | 2,1 mm | 56069  
GG | 14 + 16 cm | 1,7 mm | 54842  
GG | 14 + 16 cm | 1,9 mm | 53052  
GG | 14 + 16 cm | 1,7 mm | 56059



**anchor chains**

WG | 1,5 mm | rund | 0140  
WG | 2,0 mm | rund | 0150  
WG | 1,3 mm | geschliffen | 0440  
WG | 1,7 mm | geschliffen | 0450



**snake chains**

GG | 1,9 mm | 42019  
WG | 1,9 mm | 42019  
GG | 1,6 mm | 42016  
WG | 1,6 mm | 42016  
GG | 1,2 mm | 42012  
WG | 1,2 mm | 42012

